



INFORMATION

MAGICMOVE Gesellschaft für visuelle Effekte mbH

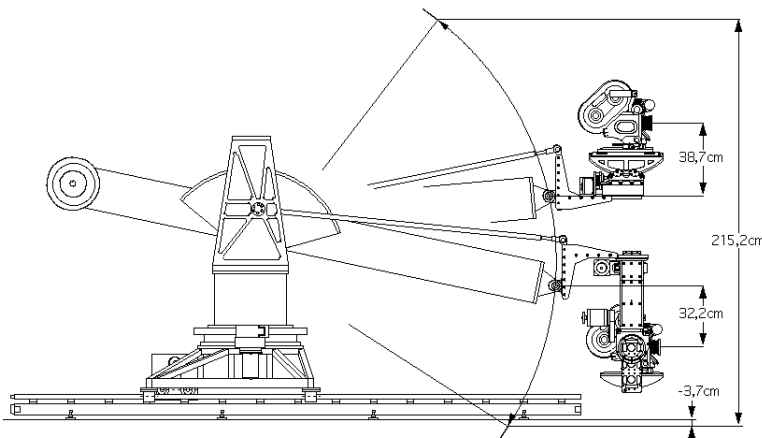
ABOUT US

MAGICMOVE rents out motion control equipment for both commercials and feature films. Our systems are designed for mobility, quick installation and have been successfully used in more than 300 productions across Europe in recent years. We aim to provide reliable performance, reduced setup times and a well-balanced price-performance ratio.

Founded in 1993 by VFX supervisor Joachim Grüninger and commercial film director Sebastian Cramer, MAGICMOVE began as a motion control facility and rapidly developed to provide complete solutions for filming visual effects.

Recently we have handled the VFX production of all miniature and motion control shots in the American features „The 13th Floor“ and „The Patriot“.

MOTION CONTROL MC-3



The MC-3 is our most frequently used rig. It has been developed from our standard systems and represents an optimal solution in terms of weight, mobility, set-up times and performance.

The jib arm is manufactured from carbon fibre and specially engineered for shooting requirements. The length of the arm, measured from the center of rotation to the

center of the camera head, is 2 m. A vertical lift of 2.15 m can be achieved. The MC-3 runs on linear tracks consisting of three segments, each 3 m in length which can be connected to a total length of 9 m. This allows a travel distance of 8.20 m.

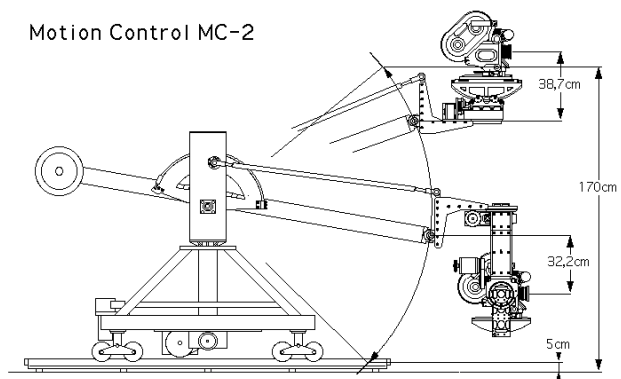
The following axes are controlled by the moco computer: track, jib lift, jib turn, pan, tilt and roll (optional). As well as focus, camera, zoom (optional) and eight other channel (expandable up to a maximum of 40 channels) for model movers, shadow flags, color changers, etc. All axes are driven by stepper motors.

MOTION CONTROL MC-3 MC-2

The MC-2 system is a smaller version of the MC-3. It runs on precision aluminium rails which are equivalent to standard dolly track. We can supply up to 27 m of this. This system is particularly suitable for long distances (up to 25 m) with short rigging times and has proven very effective in small sets and in inaccessible locations.

The rig also enables the use of any camera head in all configurations. The number and type of available axes is identical with the MC-3 system.

Motion Control MC-2





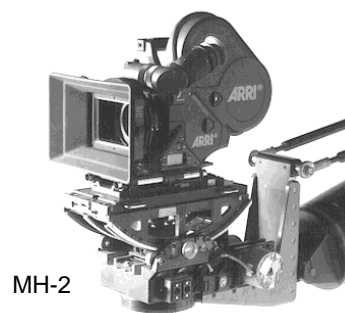
MC-DOLLY:

For fast solutions in feature films and commercials (e.g. takes with doubles, crowd duplication, etc.) a field recording configuration of a motorised dolly with pan/tilt head has proven to be an excellent solution due to its reduced size.

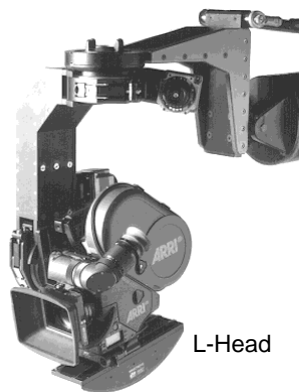
This configuration allows the control over the following axes: track, pan, tilt, focus and camera, as well as optional roll and zoom.

There are two camera heads available, i.e. the MH-2 and the L-head, which can be used

CAMERA HEADS:



MH-2



L-Head

in high or low mode (over or under-slung).

When using a periscope (Superscope or Century), we recommend the L-head.

For roll movements and dutched camera angles an additional roll axis can be provided.

Zoom and focus are controlled by separate motors.

CONTROL UNIT:

The mobile control unit contains both the control computer and motor driver assemblies. An uninterruptable power supply protects the system in case of a power failure.

The system locks to the shutter pulses of all conventional film cameras (such as ARRI 435, ARRI III, ARRI 535, ARRI SR III, Fries Mitchell, Moviecam, Panavision, etc) which is essential for repeatability in multiple passes.

The software is able to read time code, and to trigger a move at a certain time-code value. In addition, up to 16 additional trigger pulses can be set for switching lights, triggering mechanical and pyrotechnic devices or to start programmed light changes on a computerized lighting console.

The software enables programming in „virtual axis“. In this mode the camera precisely pans and tilts around the nodal point of the lens. Translations are calibrated in centimeters, in x,y,z. This feature considerably simplifies programming and enables the export/import of 3D data.

The camera operator can record pan and tilt movements with a geared head input device. In this case, the system is similar to a remote head, but the data is stored and can be reproduced precisely.





SETUP/PROGRAMMING:

Setup: Approx. 1 to 1 1/2 hours are required to set up the system under normal studio conditions. Unfavorable conditions such as uneven floors, inadequate access, very long track moves, etc. will prolong the required setup time.

If 3D computer graphics data is to be transferred, all mechanical parameters must be calibrated which may also lead to an increase in setup time.

A great amount of time can be saved during shooting, if a separate camera body is provided for the motion control, which, in most cases, enables shooting to continue during setup and programming. For this purpose, we offer our ARRI 435 at extremely favorable rates if used on the rig.

Programming times: The programming time varies with the complexity of the move. It starts with approximately 15 to 30 min for simple camera moves. But difficult moves with alternatives and changes may require over an hour. If the camera has to remain in certain positions for set dressing, light adjustment, etc. this consequently leaves less time for programming.

After approval of the move by the director and client, focus is programmed. For a standard move approximately 15 min. can be expected. In this case, the camera assistant sets the focus at several positions, which are stored accordingly. The focus is part of the motion control move and is repeated in every take.

OPERATORS:

The accompanying team generally consists of 2 Magicmove technicians. This team is responsible for setting up and programming the system. A configuration with only a camera head or model mover is accompanied by one operator.

For difficult setups (elevated tracks, uneven floor, long moves, etc.) additional manpower from the grip department maybe required for setup.

CGI:

We have been carrying out data transfer between motion control and computer animation since the mid-90s. This includes the transfer of motion data both ways: from the rig to CGI systems and, of course, the reverse direction where camera movement is performed with the help of CGI data.

This technique was successfully used in numerous feature and commercial productions. On request we can provide sample moves for testing purposes.

PRODUCTION:

Apart from motion control services, we offer complete solutions for visual effects (e.g. pyrotechnic effects, mechanical setups, miniature model explosions) especially for feature film projects.

We produced all the miniature effect shots for the features „The 13th Floor“ and „The Patriot“ as a complete production package. We can provide everything from production management, studio, camera rental, lighting, manpower, etc., right through to delivery of the processed negative. We can also process the required CG data. We also offer VFX supervision on the set.



CREDITS COMMERCIALS/FEATURE

Our advertising clients include: Mercedes-Benz, Audi, Volkswagen, Porsche, Rover, Honda, Daihatsu, Deutsche Telekom, Nokia, Siemens, Givenchy, McDonalds, Burger King, Volksbanken, VIAG and many more.

Station IDs: ARD, ZDF, VOX, RTL, Pro 7, ARTE, Timeslot, Welt der Wunder.

"The Patriot": In our current project, we have realized all the effects and miniature shots for the new Roland Emmerich film „The Patriot“, starring Mel Gibson. This film is expected to be biggest production by SONY/Columbia this year. All models required during the 7 weeks shooting period were produced by our affiliated company MAGICON.

The shooting took place in beginning of 2000 in Munich. Our motion control systems were used in almost every shot.

"The13.Floor":

In autumn 1998 we completed the entire miniature effects shooting for the feature film „The 13th Floor“ (Dir. J.Rusnak). The camera moves of background plates were 3D tracked and then reimported into the motion control system.

Additional feature credits:

"Anatomie", "Otto - der Katastofenfilm", "American Werewolf in Paris", "23", "Wing Commander", "Beyond Silence", "Amieé & Jaguar" and many more.

EQUIPMENT RATES

Prices refer to daily hire rates. If equipment is rented out for several days, rates will be reduced accordingly.

Prices quoted below serve as a rough guide to expected costs and are non-binding.

We will gladly provide you with a cost estimate on request.

MotionControl Rigs	Price/Day
MC-3 with control unit, 9 m track, 2-axes head, focus/zoom control (requires 2 operators)	EUR 2.300,--
MC-2 with control unit, 6 m track, 2-axes head, focus/zoom control, (requires 2 operators) additional tracks up to 25 m if required	EUR 1.900,--
Dolly configuration with control unit, 6 m track, 2-axis head, focus/zoom control (requires 1 operator) additional tracks up to 25 m if required	EUR 1.400,--
MotionControl head as stand alone configuration (Field Recorder) with control unit, 2-axes head, focus/zoom control (requires 1 operator)	EUR 950,--
Additional roll axis	EUR 300,--
Geared head input device	EUR 40,--
Setup days, hold days without operation	- 50 %

**Operators**

Team of 2 operators (10 h/day) 11th/12th hour: +50 %, over 13 h: +100 %, Sat.: +50 %, Sun.: +100 %	EUR 1.025,--
1 operator (10 h/day) 11th/12th hour: +50 %, over 13 h: +100 %, Sat.: +50 %, Sun.: +100 %	EUR 625,--
Travel days for operators	-50 %

Cameras

ARRI 435 Advanced, if used on Moco Rig with IVS, var. shutter, 2 mags (400ft), 3 bat.	EUR 450,--
ARRI 435 Advanced with IVS, var. shutter, 2 mags (400ft), 3 bat.	EUR 750,--
ARRI III Video ass., 3 mags (400ft), 3 bat.	EUR 350,--
Mitchell Fries R35, beam splitter var. shutter, video ass., 2 mags (400ft)	EUR 300,--

Lenses

ARRI Macro, 16mm T 2,1	EUR 75,--
ARRI Macro, 24mm T 2,1	EUR 75,--
ARRI Macro, 32mm T 2,1	EUR 75,--
ARRI Macro, 40mm T 2,1	EUR 75,--
ARRI Macro, 50mm T 3	EUR 75,--
ARRI Macro, 100mm T 3	EUR 100,--
Cooke 20-60mm, T3.1	EUR 140,--
Century Periscope V35, T3.8	EUR 100,--
Superscope CPT, straight version, T5.7	EUR 420,--
Superscope CPT, 90° Periscope, T8	EUR 500,--
Splashbox for ARRI 435 or ARRI III	EUR 250,--

Trucks

Mercedes Benz 711 D, incl. 50 km	EUR 100,--
add. km up to 200 km	EUR 1,--
add. km over 200 km	EUR 0,52,--

More detailed information on available camera equipment may be obtained on request.

CONTACT:

MAGICMOVE GmbH, Heidemannstrasse 11c, D-80939 Munich
Tel: +49 89/ 316 087-0, Fax: +49 89/ 316 087-11
www.magicmove.de, email: info@magicmove.de